



**The Fool - 0**



**The Magician - 1**



**High Priestess - 2**



**The Empress - 3**



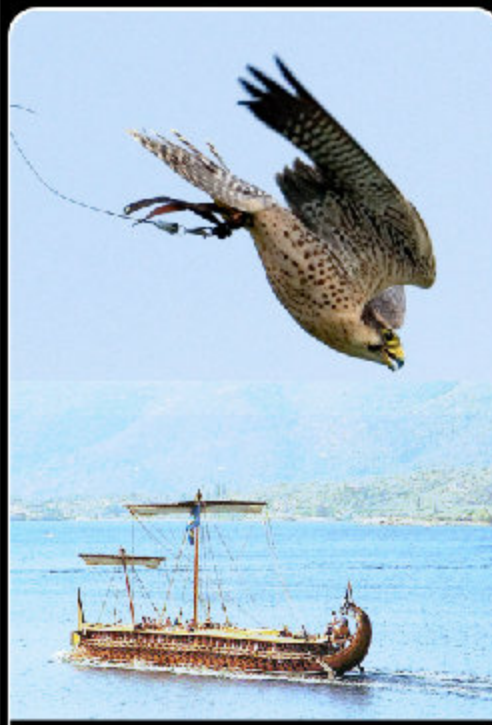
**The Emperor - 4**



**The Hierophant - 5**



**The Lovers - 6**



**The Chariot - 7**



Strength - 8



The Hermit - 9



Wheel of Fortune - 10

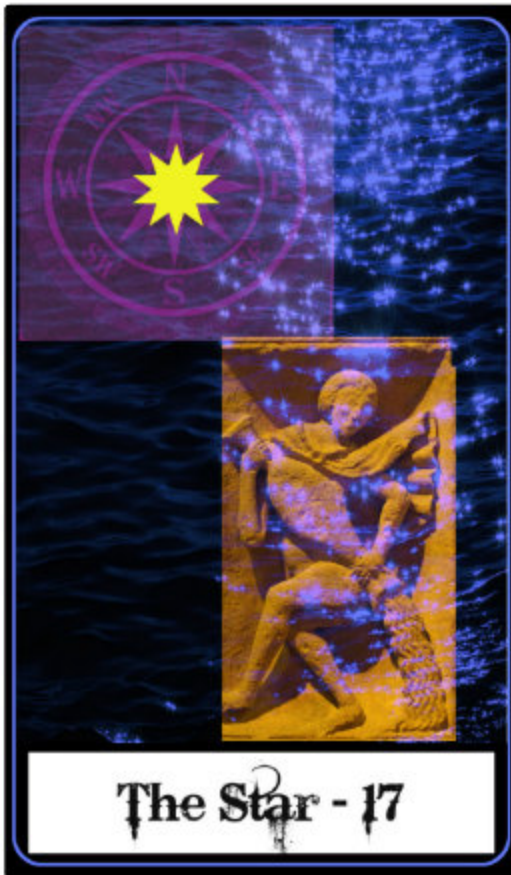


Justice - 11





The Tower - 16



The Star - 17

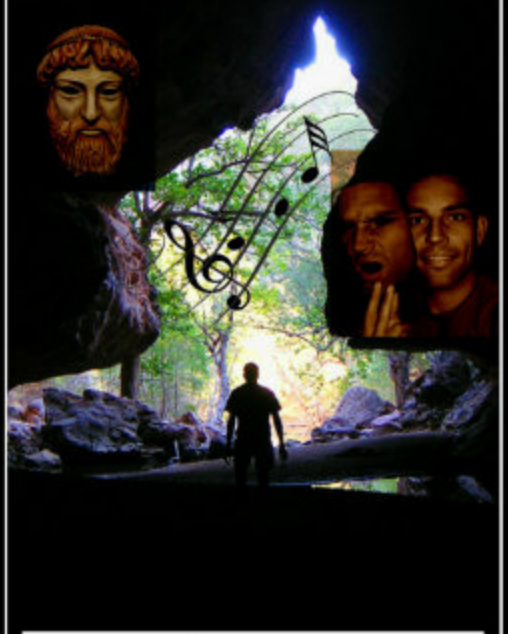


The Moon - 18



The Sun - 19

20



Judgement - 20

21



The World - 21



Ace of Wands



2 of Wands



3 of wands



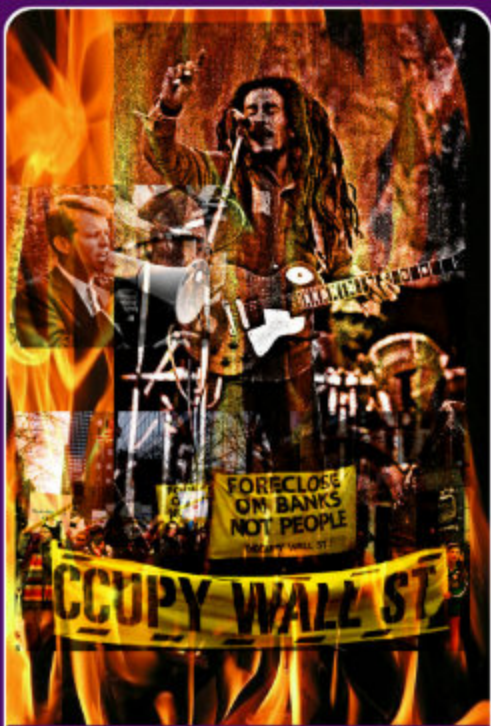
4 of wands



5 of Wands



6 of wands



7 of Wands



8 of Wands



9 of Wands



10 of Wands





King of Wands



Queen of Wands



Knight of Wands



Page of Wands



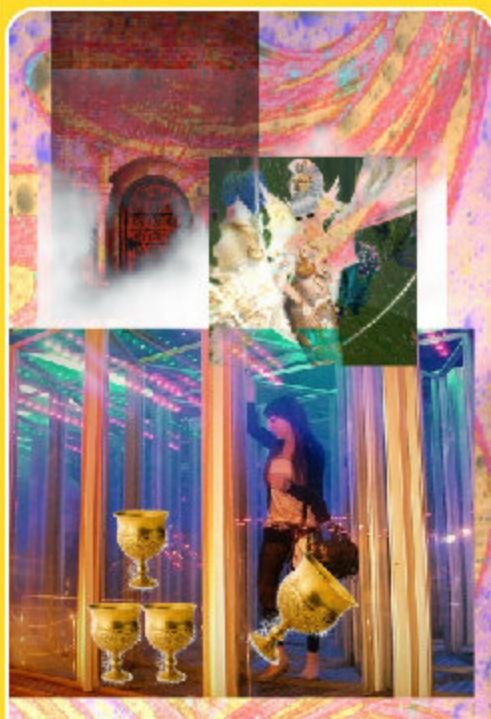
Ace of Cups



2 of cups



3 of cups



4 of cups



5 of cups



6 of cups



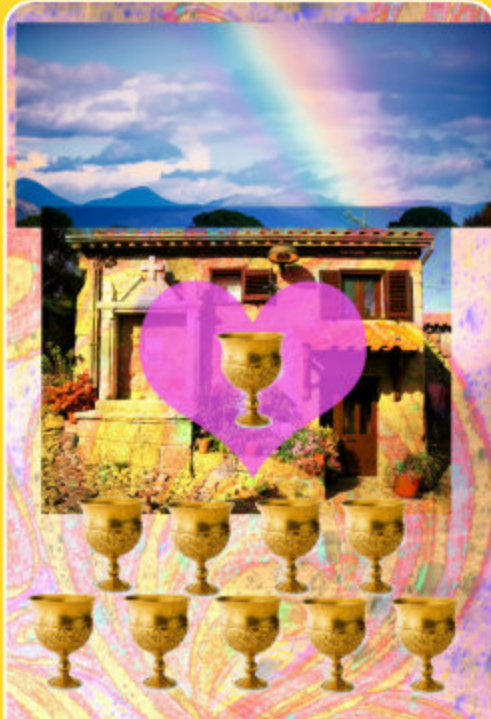
7 of cups



8 of cups



9 of cups



10 of cups



King of Cups



Queen of Cups



*Knigh*t of Cups



*Page* of Cups



*Ace* of Swords



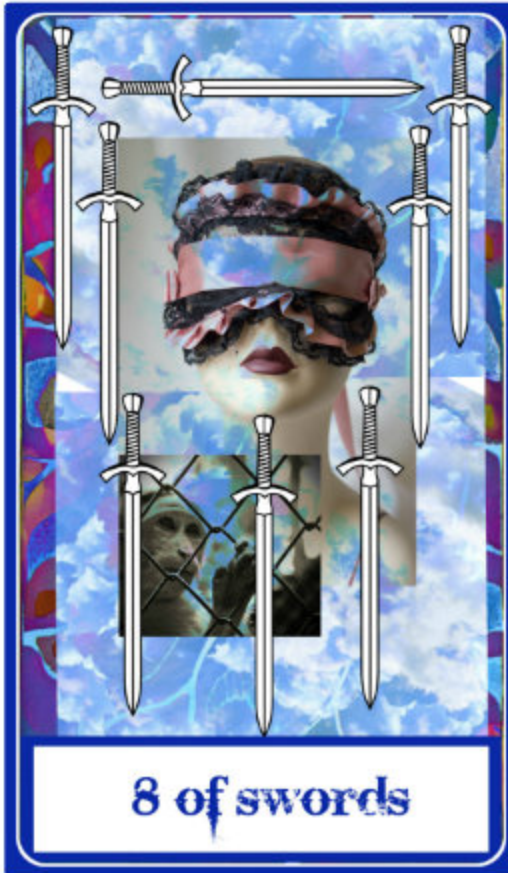
*2* of swords





A card with a blue border. The top section shows a chalkboard with a soccer field diagram and arrows indicating player movements. Below this is a woman's face on the left and a map of the United States on the right. Seven swords are overlaid on the map. A sign in the bottom left corner reads "Ask Me About My EVIL PLAN".

7 of swords



A card with a blue border. The background is a collage of a woman's face wearing a blindfold, a person behind a chain-link fence, and a colorful abstract pattern. Eight swords are overlaid on the collage.

8 of swords



A card with a blue border. The background features a collage of a woman's face, a group of people in white robes, a large grey creature, and a red shipping container with "WABASH" written on it. Nine swords are overlaid on the collage.

9 of swords



A card with a blue border. The background features a collage of the text "The End" in a cursive font, a runner in a red shirt, and a woman in a black tank top with a race bib number "1884". Ten swords are overlaid on the collage.

10 of swords



King of Swords



Queen of Swords



Knight of Swords



Page of Swords





Ace of Pentacles



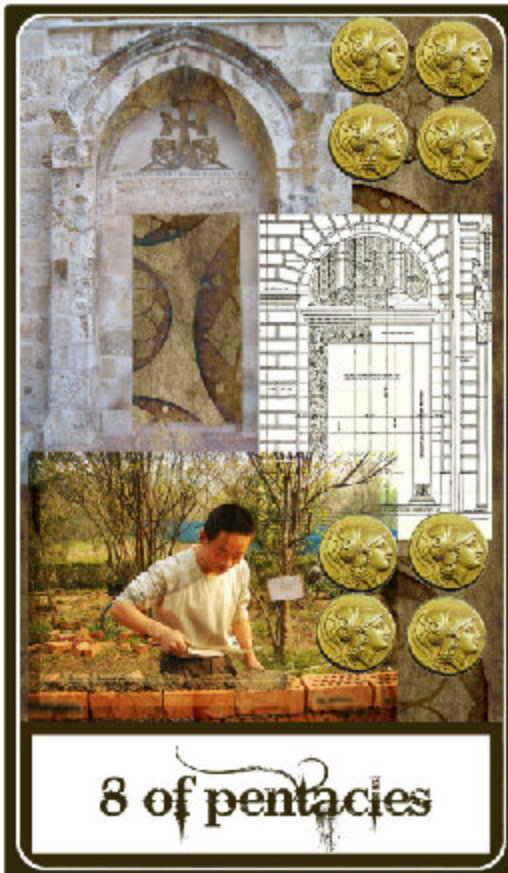
2 of pentacles



3 of pentacles



4 of pentacles





9 of pentacles



10 of pentacles



King of Pentacles



Queen of Pentacles

